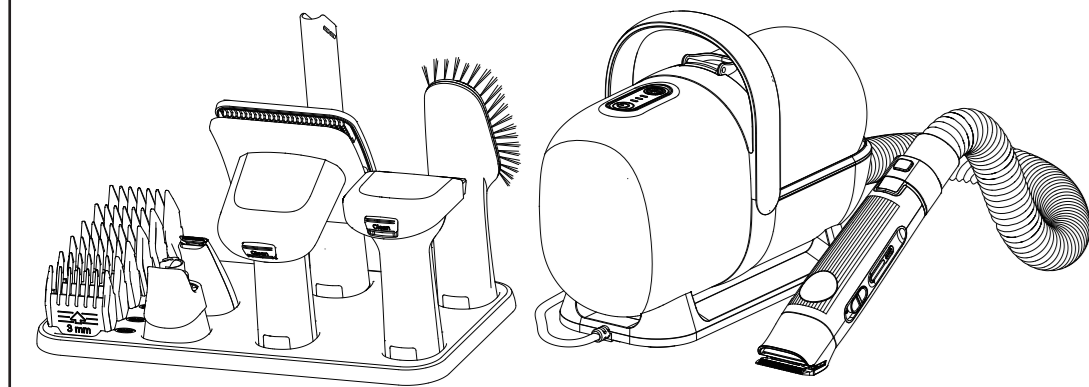


Pet Grooming Kit



User Guide

Contents

- Safety Information 1
- Cautions 2
- Package List 3
- Vacuum Device 4
- Installation 4-5
- Wireless Clipper 6
- Use of Accessories 7-9
- Care and Maintenance 10-12
- Specifications 12
- Trouble Shooting 13
- Q&A 14
- Warm Tips 14
- Warranty 15

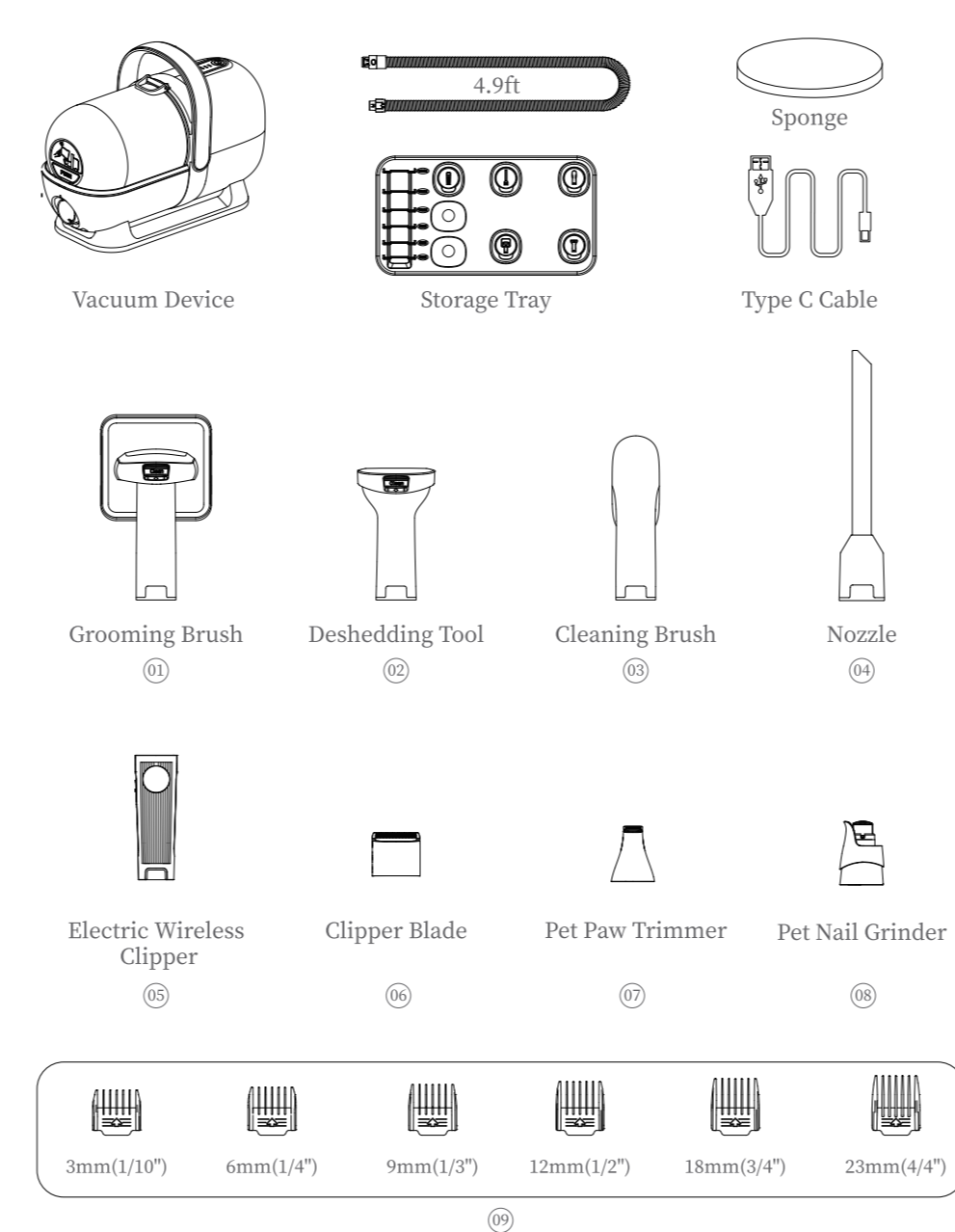
Safety Information

- This product is only for household use, not for commercial or industrial use; not for outdoor or humid places.
- Never use this product alone for children or people with weak thinking ability.
- When using it, please use it in an environment where it can be used safely and under the instructions and supervision of a person who understands the safe use of the product and its hazards. Under such circumstances, please never let children use it;
- Please do not touch the power plug and this product with wet hands, please do not absorb moisture and liquid;
- Please do not use this product when the power cord or power plug is damaged; In the case of this product not working normally, in the case of damage, placed outdoors or immersed in liquid, please be sure to contact our company;
- Please do not disassemble the product, wrong assembly method may cause electric shock or fire, please contact our company when you need repair;
- Please do not inhale flammable or combustible liquids such as gasoline. In addition, please do not use it in an environment with flammable or combustible gas or nearby;
- Do not pull the power cord, do not put heavy objects on the top of the machine, and do not clamp the wires to close the door;
- Please do not smoke anything that is on fire, smoking or high temperature such as cigarettes, matches, hot soot;
- Please do not put anything into the opening or block the opening for use; After use, please pull out the plug from the socket before maintenance or parts replacement;
- Please do not use or keep it in humid places such as outdoors or in the bathroom, or where a glass of water is wet;
- Please do not use products with fragrances and fragrances as filters. Such chemicals may become one of the causes of fire.

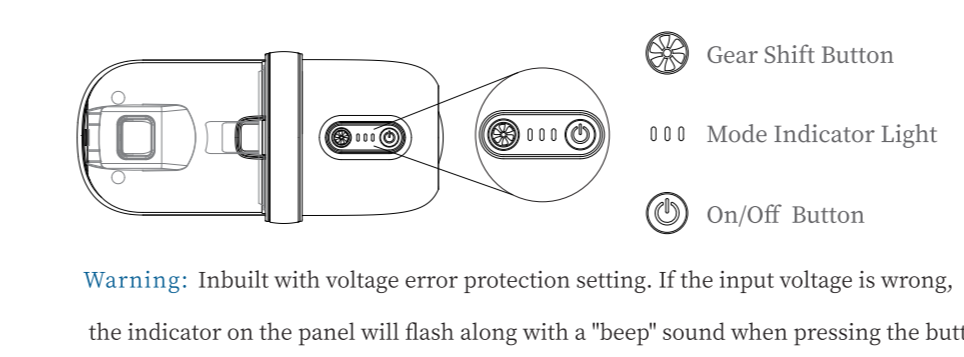
Cautions

- Please do not operate or unplug the power cord with wet hands.
- In order to avoid malfunction and electric shock, please absolutely prohibit.
- Please do not use in places with smoke and other flammable things.
- Because it may cause fire and explosion, please do not inhale highly flammable liquids and combustibles.
- There may be a peculiar smell when used for the first time, but it will not cause adverse effects on the body.
- When using this product for the first time, there will be an odor but it will disappear after a while. Please understand.
- Please keep the dust cup and filter clean for a long time.
- If the dust cup and filter are dirty, they cause malfunction, and unexpected accidents.
- When maintaining, be sure to cut off the power and unplug the power cord before proceeding.
- If the power is turned on for maintenance, there will be a risk of electric shock, accidents and injuries.
- This product stops its operation when the temperature rises abnormally.
- If abnormal heating of the motor occurs, or if the suction port is blocked, the operation will stop immediately. Take out the dust cup, confirm that the suction port and filter are clean, and then turn on 60 minutes later.
- Be sure to use each filter with the installed state.
- Please be sure to install and use the filter. If the filter is removed and used, it will be one of the reasons for the failure.

Package List

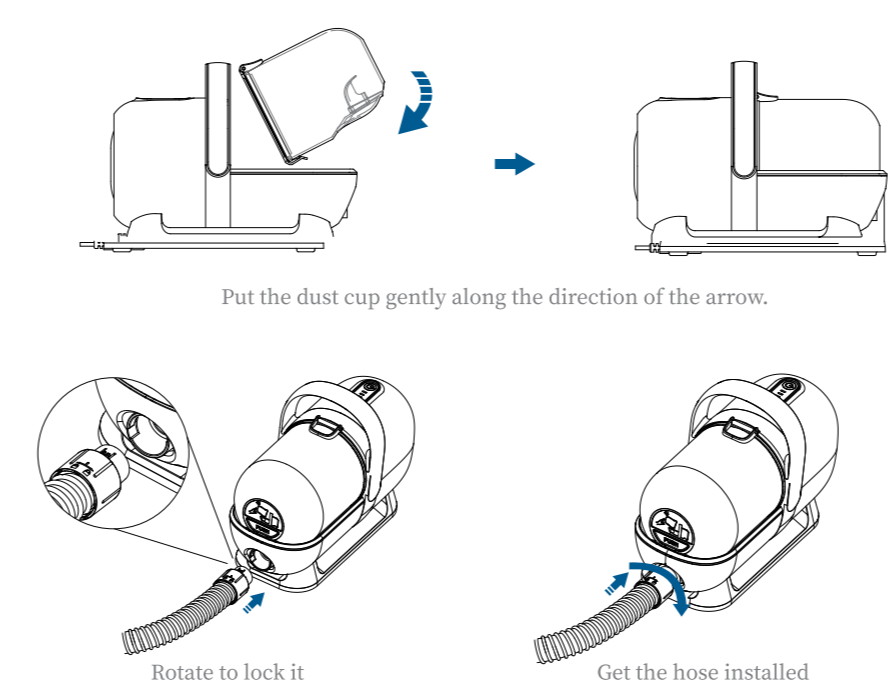


Vacuum Device

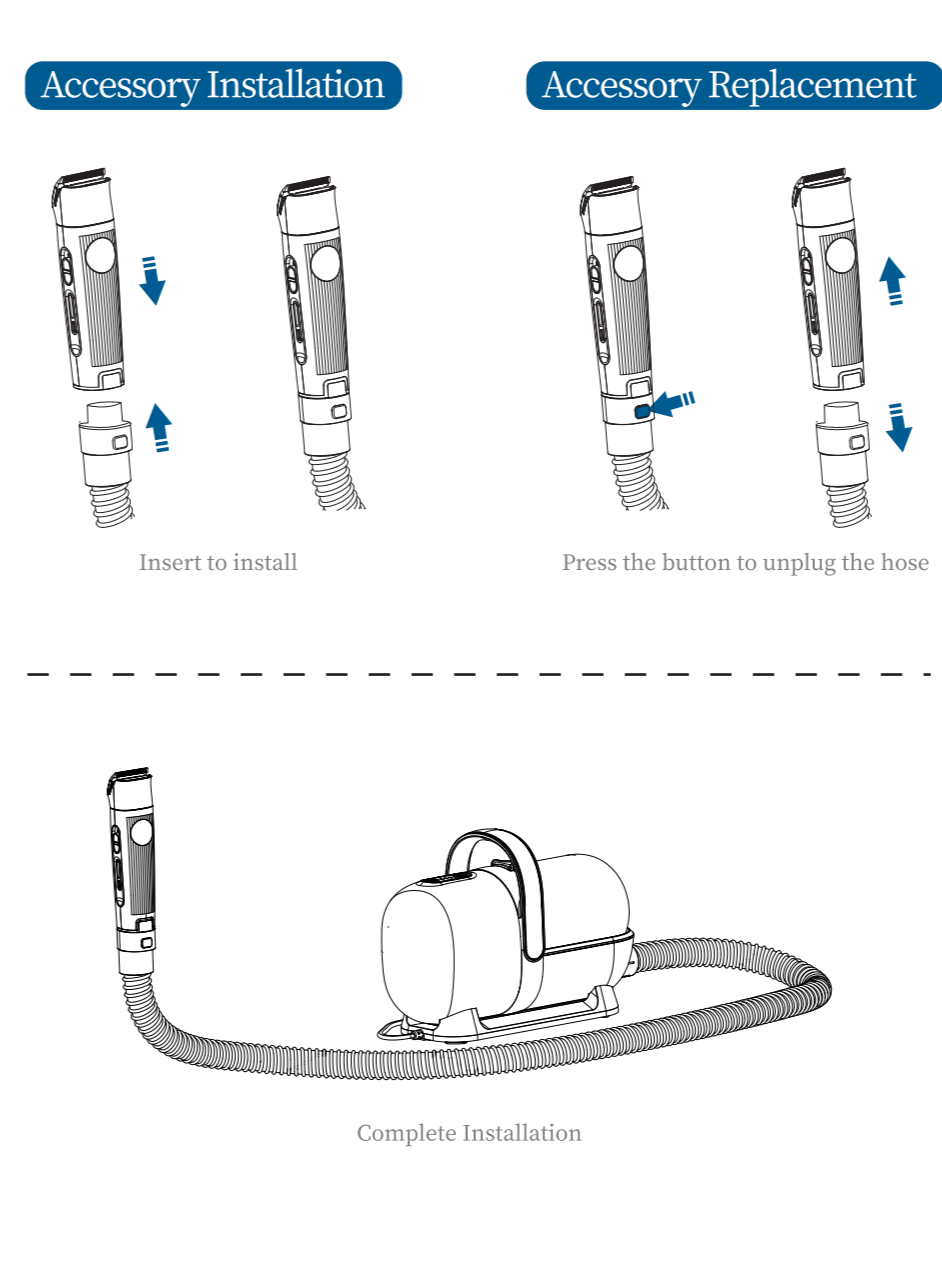


Warning: Inbuilt with voltage error protection setting. If the input voltage is wrong, the indicator on the panel will flash along with a 'beep' sound when pressing the button.

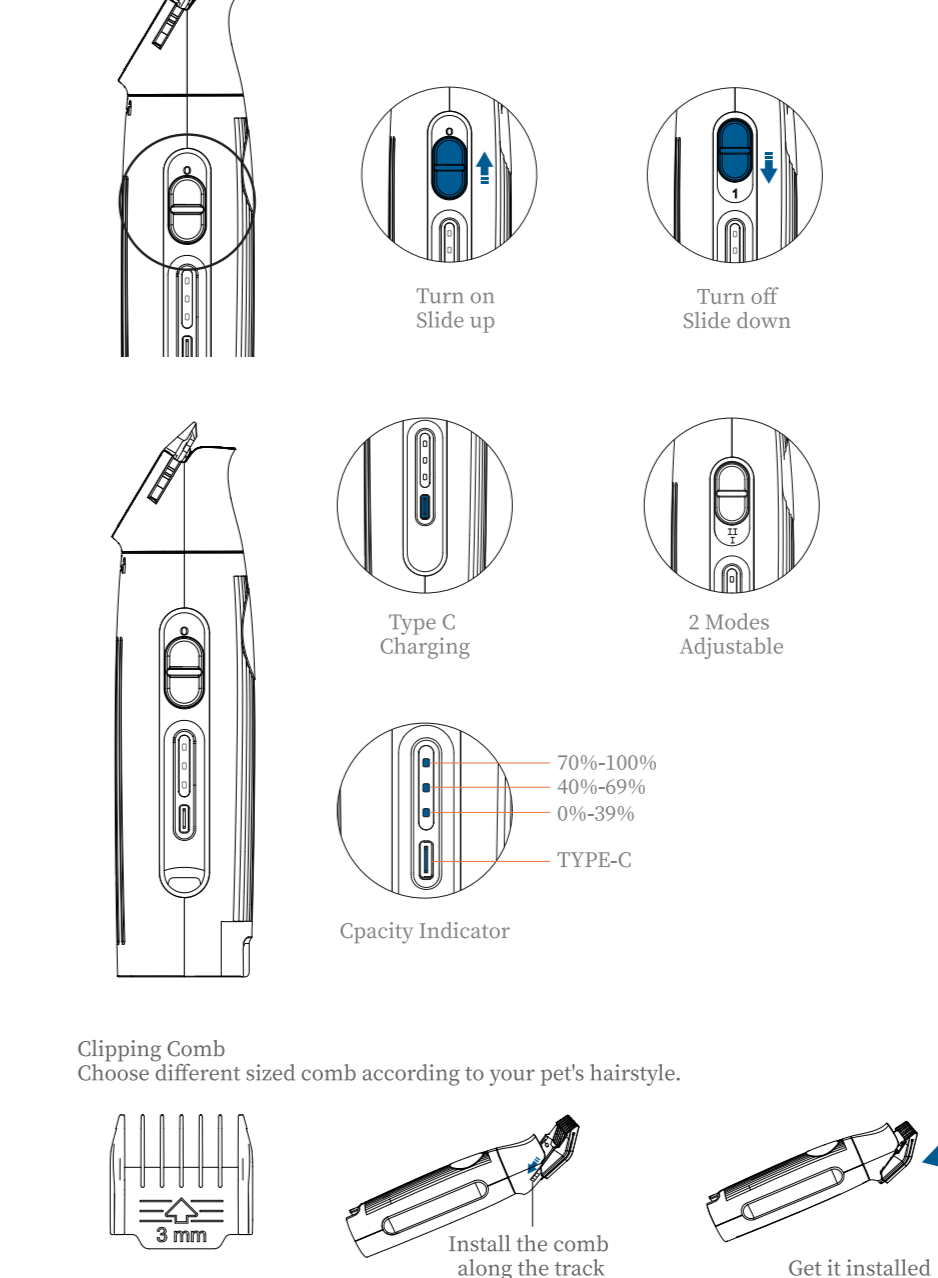
Installation



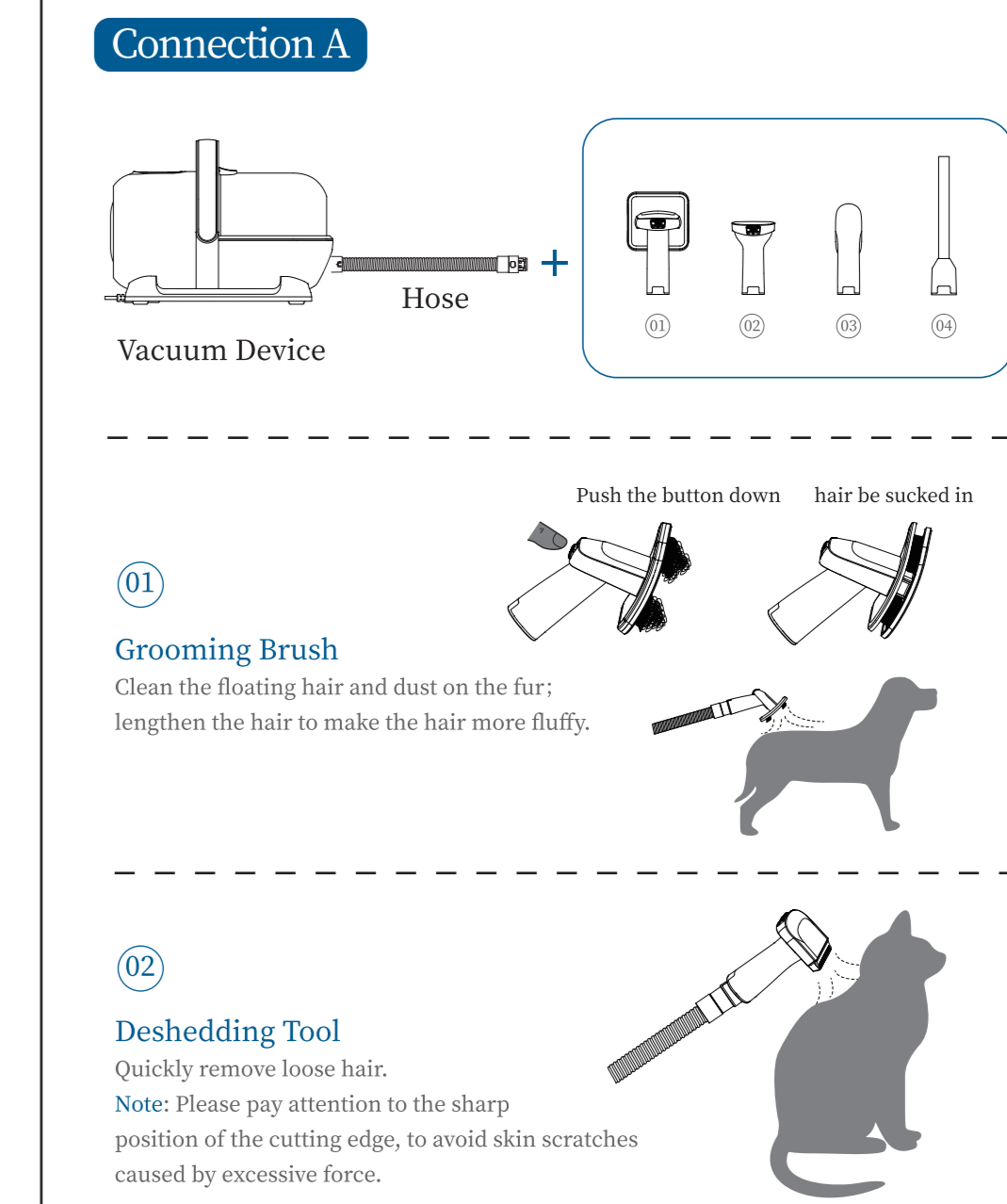
Installation



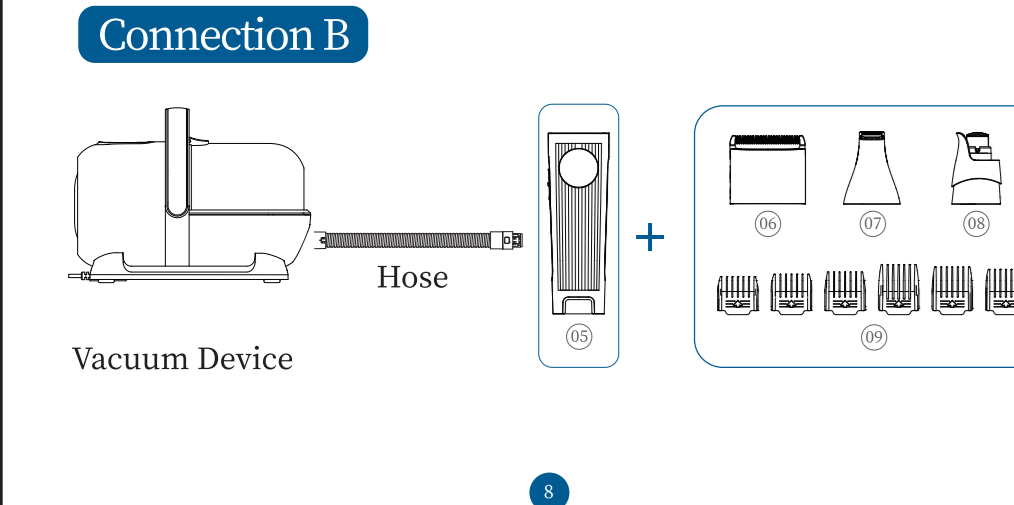
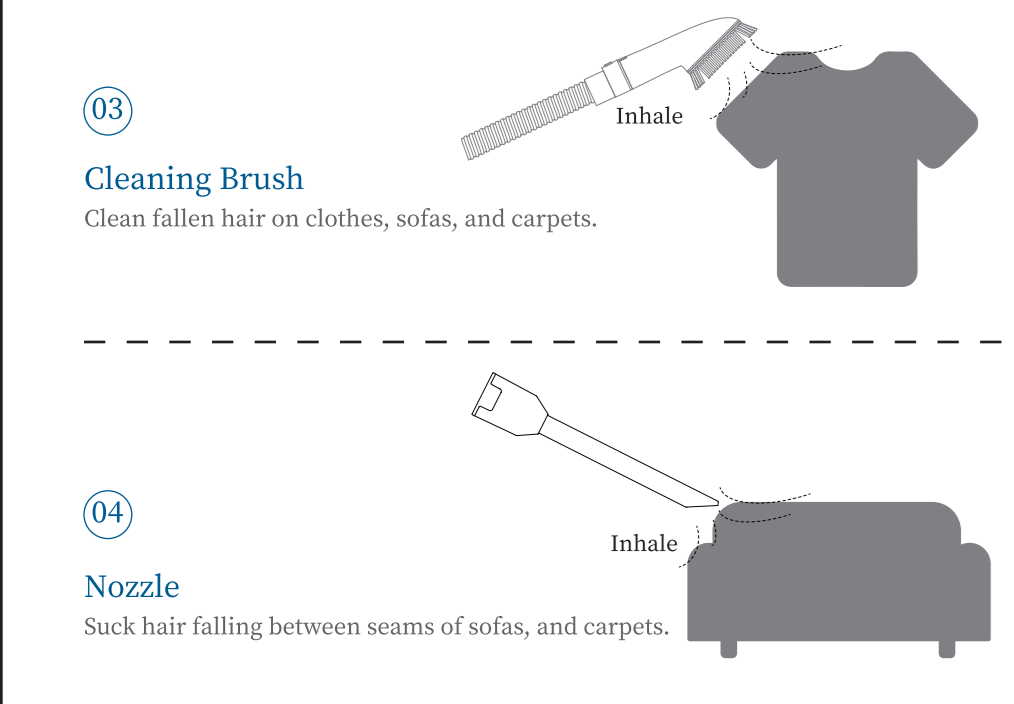
Wireless Clipper



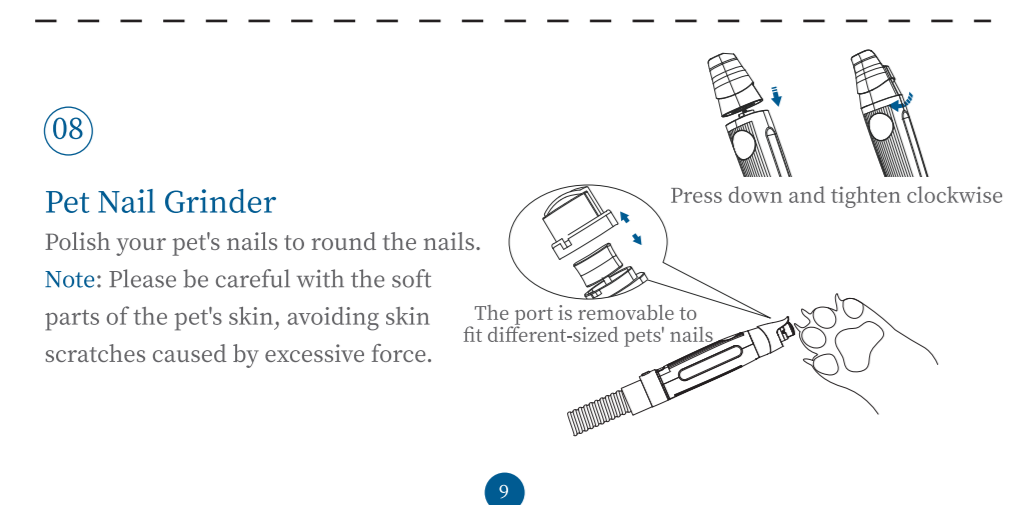
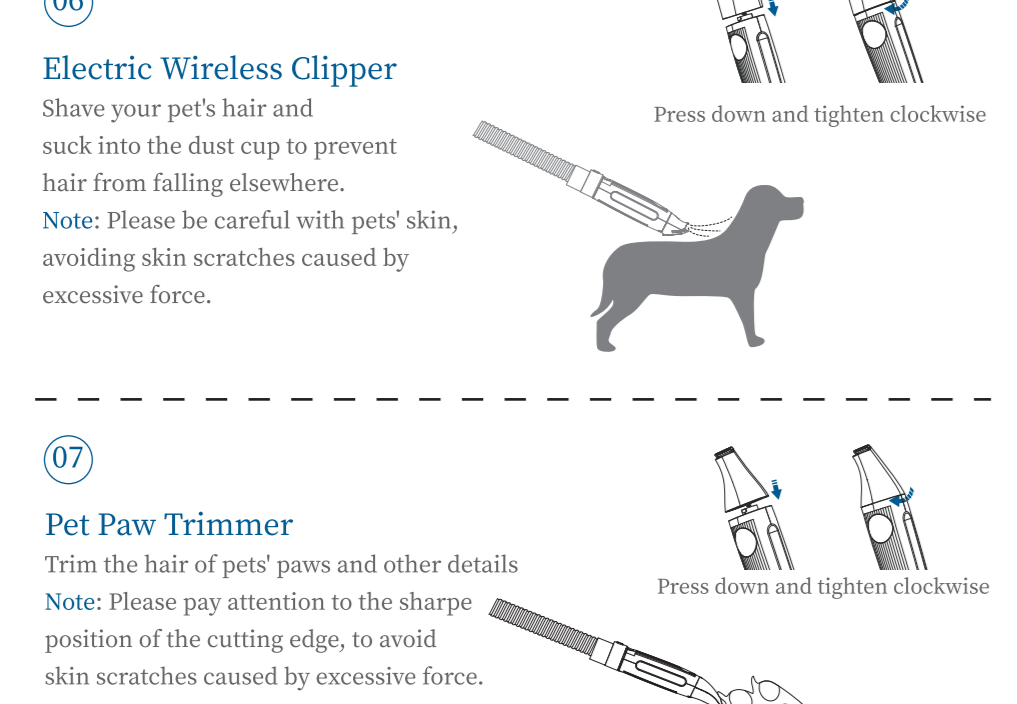
Use of Accessories



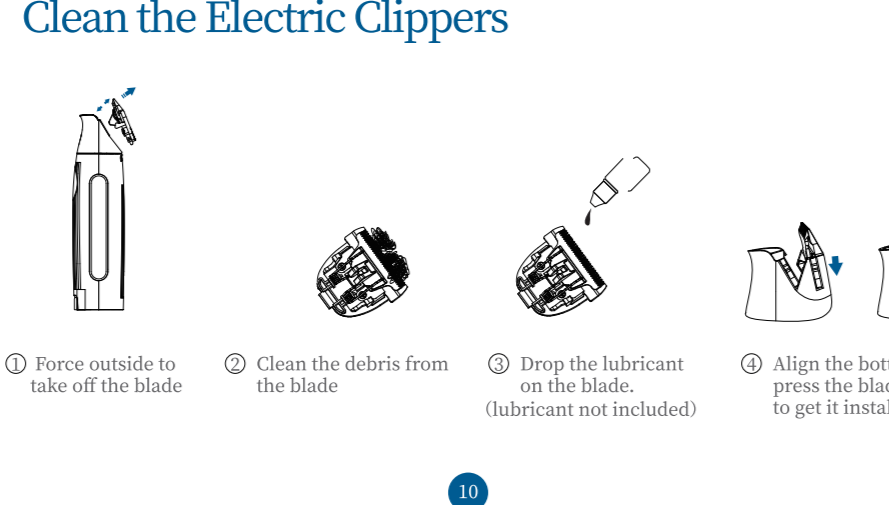
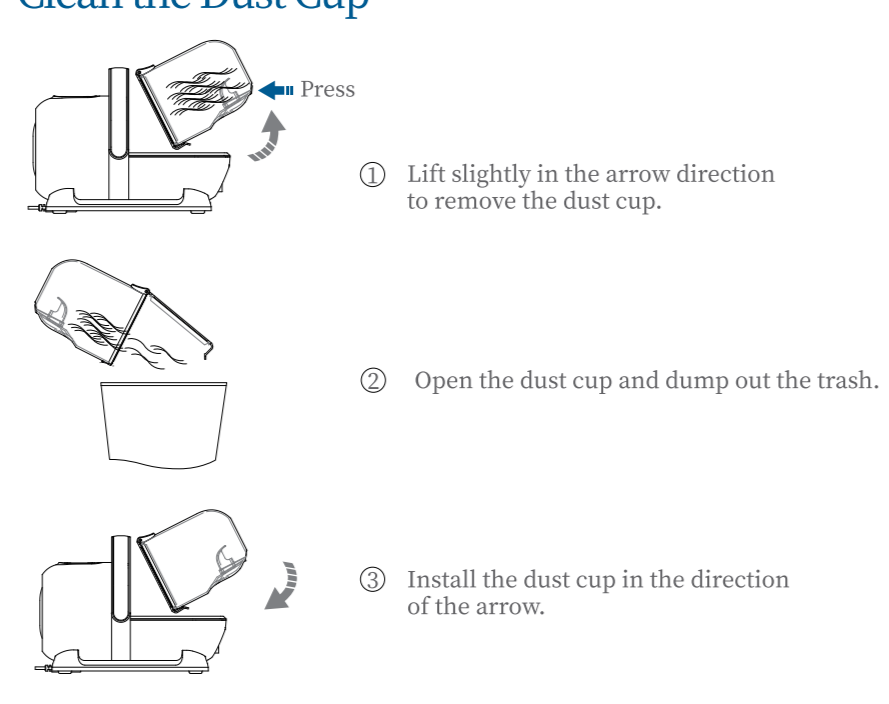
Use of Accessories



Use of Accessories



Care and Maintenance



Care and Maintenance



Care and Maintenance

Note:
• The filter should be cleaned with cold water at least every other month.
• The maintenance period is different on the basis of the use frequency and condition.
• When cleaning, please disconnect the power supply and unplug the plug from the socket.
• Be sure to install sponge filter after drying. Wet sponge filter will cause electric shock and malfunction.

Specifications

Input	220-240V~50Hz	Input	DC 5V 1A
Power	300W	Power	5W
Hose Length	4.9FT	Charge time	3h
Dust Cup Capacity	1.4L	Discharge time	2.5h
Product Size	11.7" x 7.5" x 5.1"	1-Li-ion battery	3.7V 1850mAh
Wire Length	8.7FT		
N.W.	6.68LB		
Maximum Noise	75dB		

Troubleshooting

Please Stop using the product immediately if any abnormal situation occurs in the using process. Refer to the following FAQ to troubleshoot.

Please do not disassemble the machine to maintain by yourself

Issue	Troubleshooting	Solution
Can't be powered on	The plug is not inserted properly Switch of the machine is not turned on	Replug it in place Press the switch button to turn it on
Weak suction	The flexible hose is clogged Dust cup is full Filter is clogged	Clean the hose and suction mouth Empty the dust cup Clean the filter
The clipper is not smooth	The head of clipper is clogged The blade is not lubricated enough	Remove excess hair from the blade Drip lubricating oil
Abnormal noise after a period of use	The head of clipper is clogged The blade is not lubricated enough	Remove excess hair from the blade Drip lubricating oil
Automatically shuts down shortly after startup	The head of clipper is clogged The blade is not lubricated enough	Remove excess hair from the blade Drip lubricating oil
Device heats up	Continuously use too long Don't worry too much about it	Keep off for 20 minutes before restarting Overheating protection program setted
Blade dislodged/loose	Didn't installed in place	Change the blade

Q&A

Question	Answer
How long are the wire and hose?	The wire is 8.7ft long, and the hose is 4.9ft.
Can the wireless clipper be used alone?	Yes, the clipper is inbuilt with rechargeable lithium battery.
How to clean the clipper?	Please refer to the 8th page of the manual or follow the video from the QR code
How long does the battery last?	The clipper can last 2 hours after fully charged.
Can the hose be replaced?	Yes, the hose is detachable, and we sell hoses separately.
Can the blades be replaced?	Yes, the blades are detachable, and we sell blades separately.
Is there a blade to trim the hair of the claws?	Yes, it comes with a "Pet Paw Trimmer" to do it.
In addition to sucking hair, can this device suck anything else?	Yes, it can be used as a vacuum to clean sofa, bed.
Are the accessories of the groomer compatible with other brands?	No, but we provide exclusive accessories.
How about the noise? Will it scare my pet?	The working sound is 65db, won't scare pets.
Can the HEPA be replaced?	Yes, it is suggested to be replaced every 6 months, and we sell HEPA separately.

Warm Tips

- To make your pet even more enjoyable in grooming, you may following these tips:
1. Turn on the machine for a while before using to let your pet get used to the working noise.
 2. Keep the machine away from pets as much as possible, in order to minimize noise scare.

Warranty

1. The warranty period is 12 months from the date of purchase. The warranty is only limited to free repair of the product purchased. Consumables and accessories are not subject to warranty.
2. If it is damaged or malfunctioned during normal use, it will be repaired free of charge within the warranty period. If it cannot be repaired, a replacement will be provided.
3. The following conditions are paid repairs even during the warranty period:
 - (a) Failure and damage caused by misuse or carelessness;
 - (b) Damage due to shipping;
 - (c) Damage caused by pets (scratches, bites, touching the body or riding products);
 - (d) Failure and damage caused by fire, earthquake, and other natural disasters;
 - (e) Failure and damage during use other than general household use (long-term use for business, etc.);
4. In the following situations, no repairs will be provided regardless of the warranty period:
 - (a) Products not purchased directly from our sales channels (e.g. personal sales, auctions, etc.);
 - (b) The customer opens the product or tries to reform it;
 - (c) Consumables and accessories.
5. Shipping cost will be borne or reimbursed when the product is covered by warranty service. However cost of packaging materials will not be covered.
6. If it is not covered by the warranty, shipping cost and repair fees will be charged when returning.
7. The warranty period for the exchange product is subject to the warranty period before the exchange (counted from the original purchase date);
8. Repair or replacement is only valid in certain countries.
9. Please contact customer service of purchase channel for guidance if you have a question or need to repair.
10. Regulations may be changed without notice. All repairs and request will be handled according to the most updated warranty.